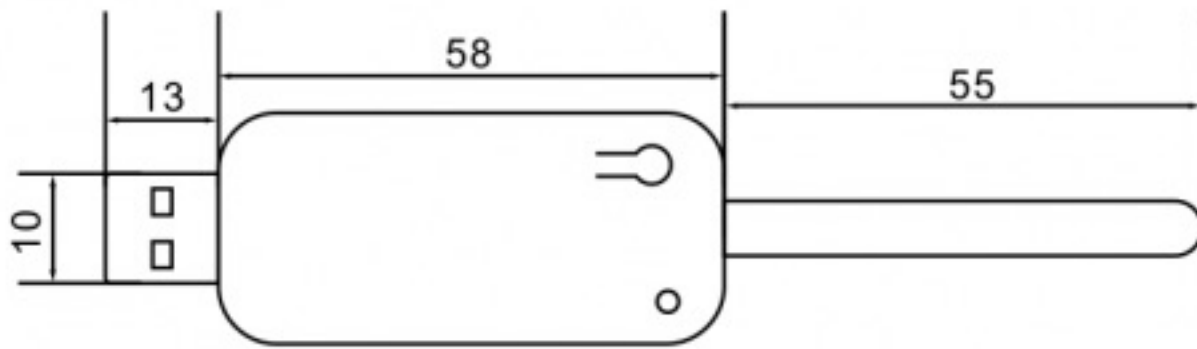


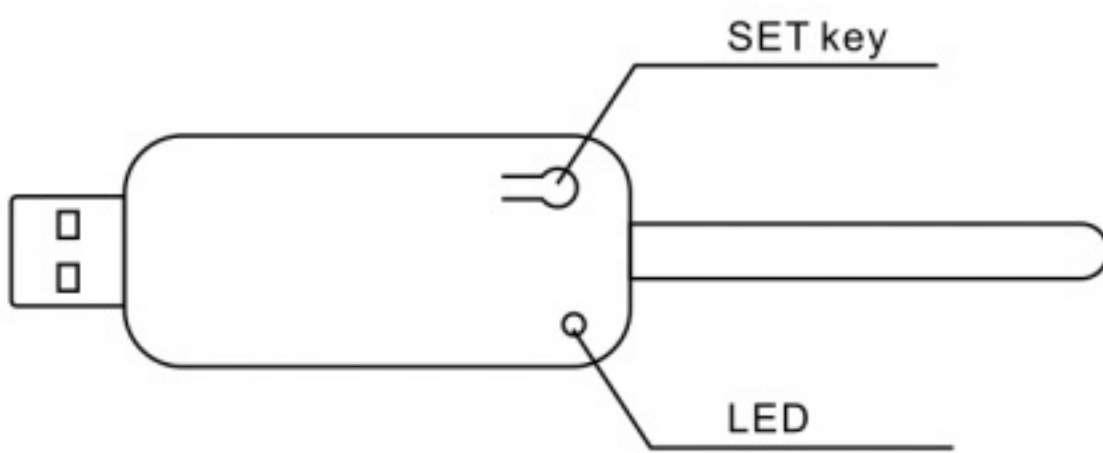
# Product specification

## 1. Product dimension



Motor's length ( unit:mm)

## 2. Product Appearance



## 3. Announcements

1. Use a power supply that meets product specifications to power the device.
2. You can use a normal 5V USB adapter to power the device, or use a "charge bank" temporary power supply.
3. After power-on, the red light is slightly on to indicate the power work, press the button and raise the red light will flash. Otherwise, the device functions ab normally.

# Network configuration

①



Click "Add".

②



Click "Scan".

③



Scan the qr code of the gateway.

④



Enter the configuration page and click confirm to add.

⑤



Adding a device.

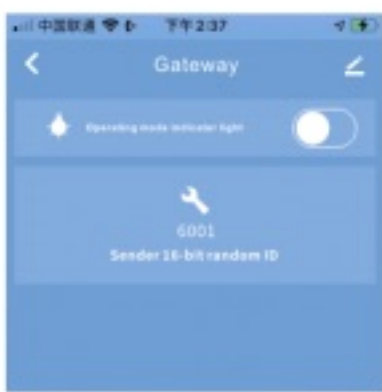
⑥



Added successfully.

## Set to code

①



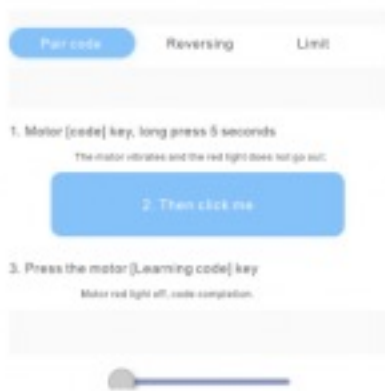
Click "Work Mode Indicator" to find the matched gateway.

②



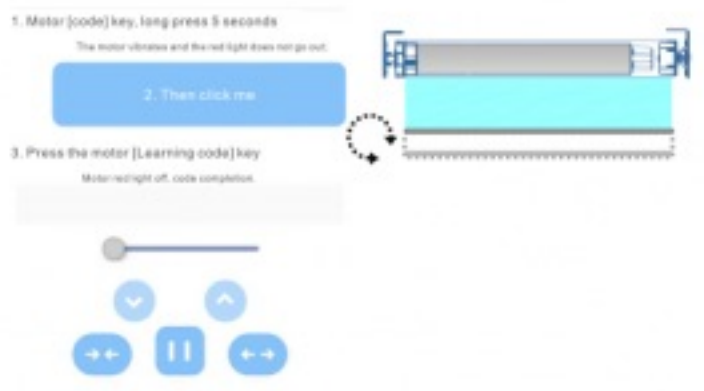
Click on curtains.

③



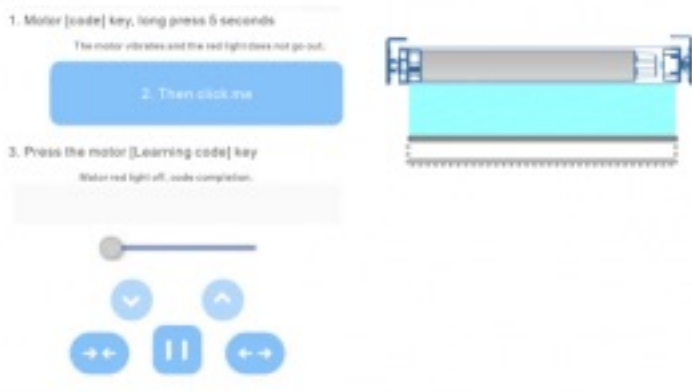
Enter the page of "code".

④



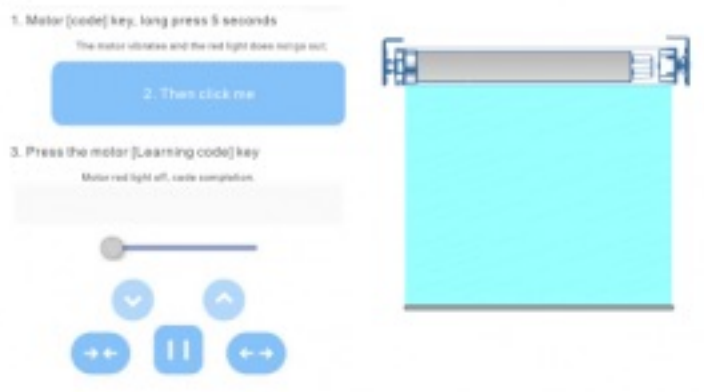
Long press the motor code key for 5 seconds, LED long light, and then point me.

⑤



Press the motor learning code key, LED off, learning code completed.

⑥



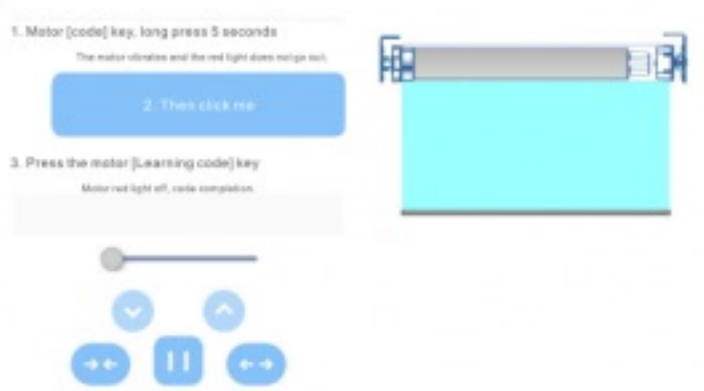
Press the  $\leftrightarrow$ , the curtain closed.

⑦



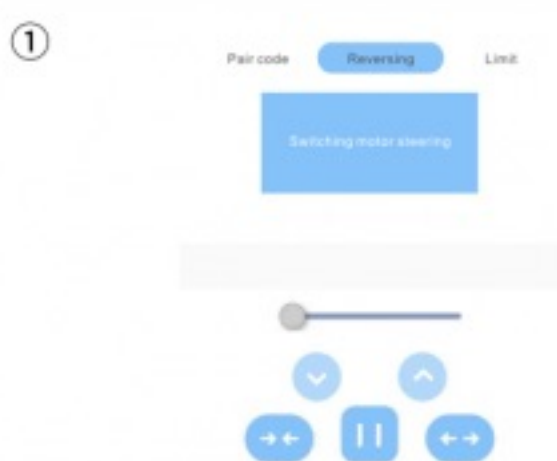
Press the  $\leftrightarrow$ , the curtain open.

⑧

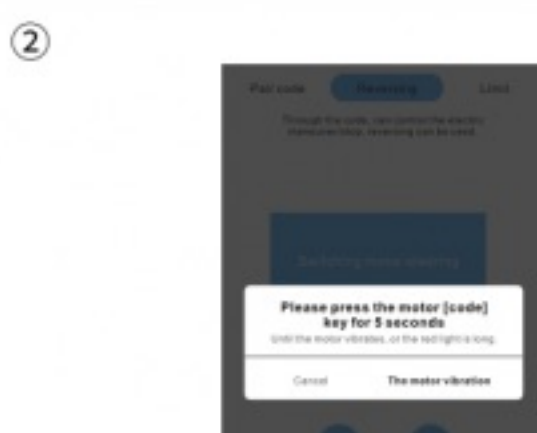


Press the  $\|\|$ , the curtain stop.

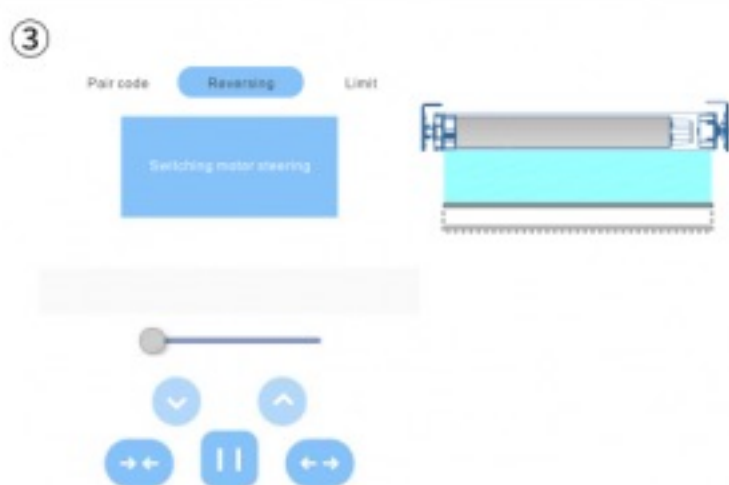
# Reversing setting



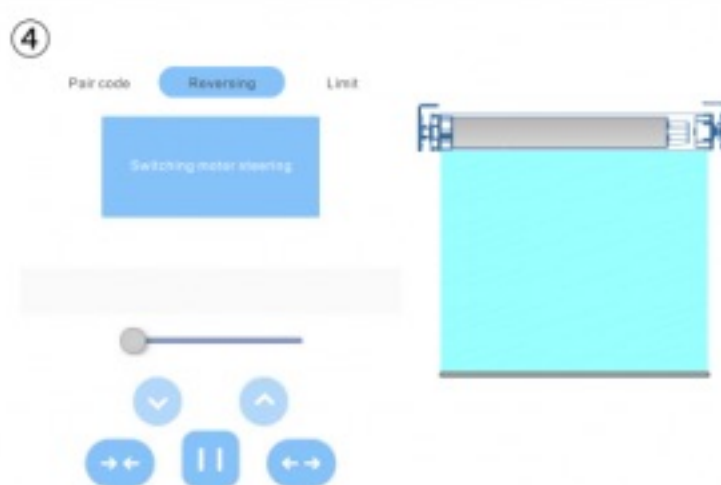
Click the commutation Settings page.



Press switch motor steering, long press the motor learning code key for 5 seconds, LED long light, motor vibration.

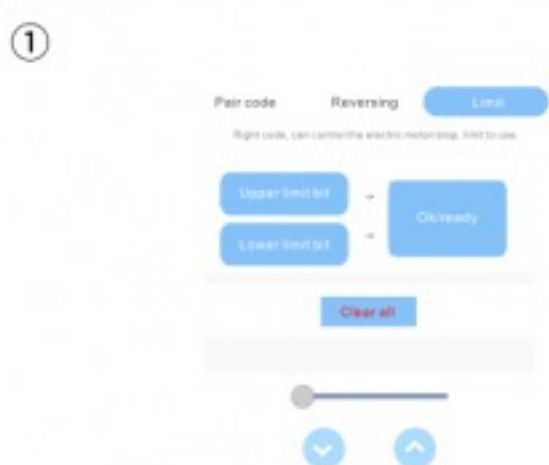


Press the  $\leftrightarrow$ , the curtain open.



Press the  $\leftrightarrow$ , the curtain open.

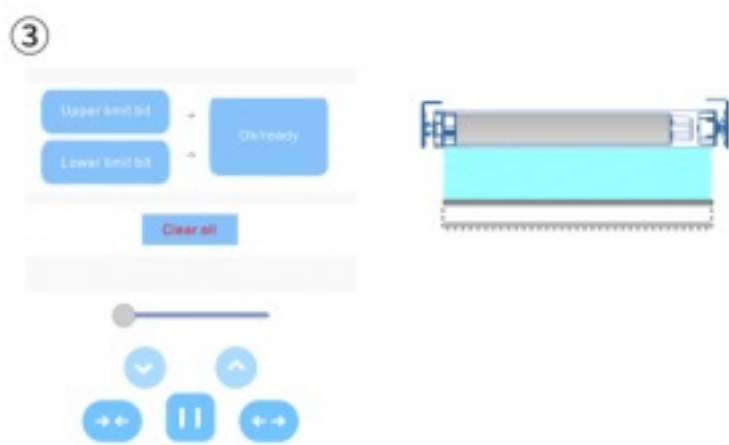
# Limit setting



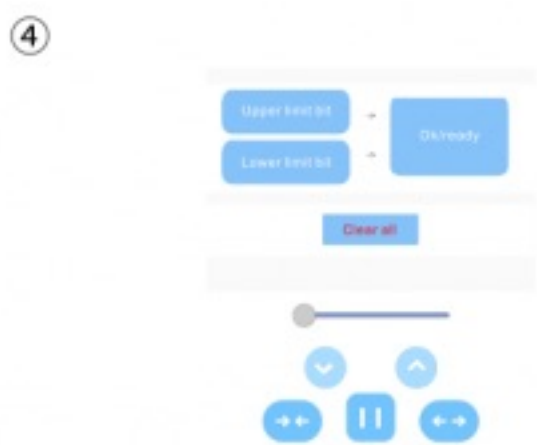
Motor limit setting page.



According to the "ceiling" motor flashing, press the ok button.



Press the  $\leftrightarrow$ , the curtains are adjusted to the right position.



Click "ok/ready" for confirmation.

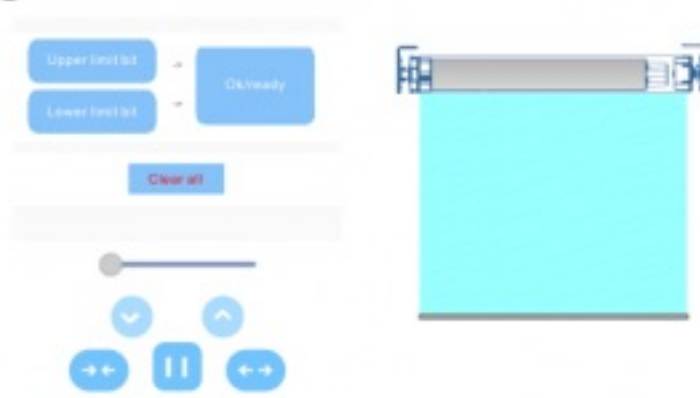


⑤



Press "lower limit", the motor blinks, and press the "OK" button.

⑥



Press the →←, the curtains are adjusted to the right position.

⑦



Click "ok/ready" for confirmation.

## Firmware upgrade

①



Click "←".

②



Click "Device Upgrade", and the red dot indicates that there is an update.

③



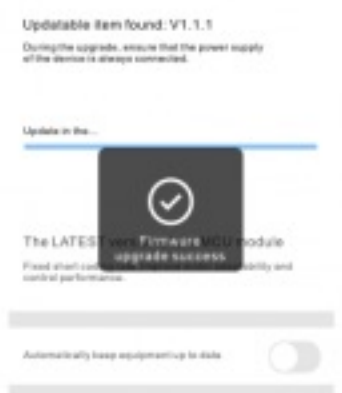
Click "Start update", the gateway will continuously flash blue indicator for one minute.

④



If the indicator is steady red, reinsert the gateway.

⑤



APP prompt promotion, firmware version changes for the new version.